

CAPSYLITE® SPL™ PAR38

Halogen Lamps



- Totally new halogen lens/reflector SYSTEM
- Superior beam control and sharp cutoff
- Improved optical system provides consistent, uniform performance from lamp to lamp
- Superior Life : Up to 4500 hour lamp life
- Innovative technology for high performance
- Energy efficient halogen sources
- Lens stamped with beam pattern for easy identification

ECOLOGIC® is a comprehensive program of OSRAM SYLVANIA focused on addressing environmental issues at all stages of lamp life.



SYLVANIA CAPSYLITE SPL achieves its extraordinary performance by combining a tungsten halogen capsule with a unique lens/reflector system.

The CAPSYLITE SPL product line is designed to give a more even distribution of high level light across as broad an area as possible. The result is a uniform light level on the target that maximizes the impact of the halogen source.

CAPSYLITE SPL PAR38 products are available in wattages ranging from 45 to 250 and in beam spreads ranging from 9° to 50°. There is a CAPSYLITE SPL available to meet virtually any lighting need.

Product Availability

Product	Wattage	Beam Angle
PAR38 SPL	45	SP 9°, WSP 12°, FL 30°, WFL 50°
	60	SP 9°, WSP 12°, NFL 25°, FL 30°
	75	SP 9°, WSP 12°, FL 30°, VWFL 50°
	90	SP 9°, WSP 12°, FL 30°, WFL 50°, NFL 25°
	120	SP 10°, NFL 25°, FL 30°, WFL 50°
	250	SP 10°, FL 30°

Application Information

Applications

Highlight merchandise
Accent / display lighting
Floor lighting
General lighting
Indoor / Outdoor
Retail
Art galleries
Hotels, restaurants
Offices
Homes
Hard-to-reach areas

Application Notes

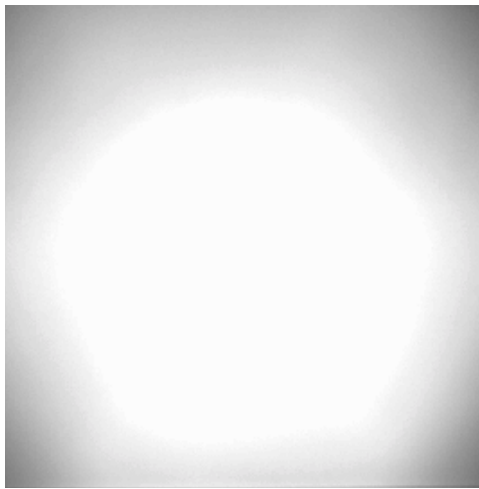
1. Lens stamped with beam pattern
2. Better cutoff – maximum lumens in the beam
3. Eliminates stray light at the edges of the beam pattern
4. Superior candlepower rating
5. New distinctive appearance and superior performance due to SPL optics which combines new spiral reflector and lens

SYLVANIA

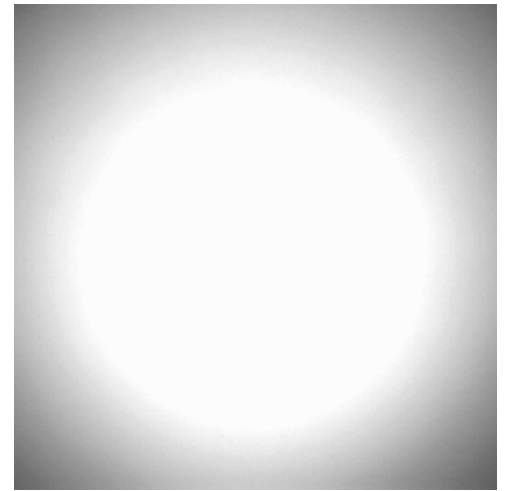
Sample Specification

Lamp shall be CAPSYLITE SPL halogen PAR38 (2500 3000, or 4500) – hour average rated life, shall be diode free and employ stabilized coils. Lamp shall be energy efficient and produced to EPACT standards. Lamp base shall contain no lead solder to make the disposal of used CAPSYLITE SPL lamps easier for the end user.

Optical Performance



Standard Halogen PAR



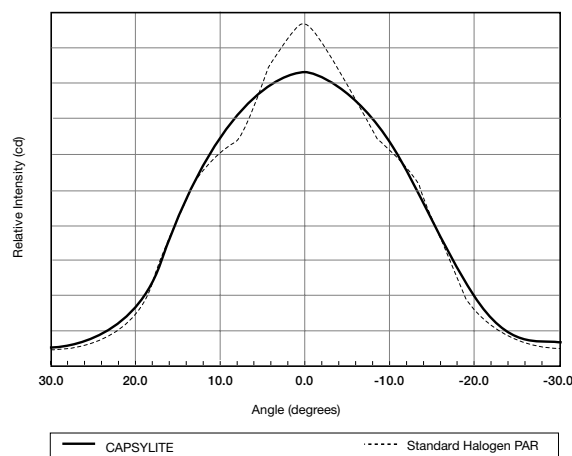
New CAPSYLITE SPL

CAPSYLITE SPL Optical System

CAPSYLITE PAR38 lamps employ a patented spiral lenticule layout on their lenses. These patterns were computer designed to deliver a smooth, round beam pattern that is free from hot spots and stray light. The new lenses, however, are only half of the story. The new spiral flat reflectors were also computer designed to work in concert with the lenses. The spiral flats on the inner surface of the reflector begin to shape and contour the light rays before they reach the lens. The reflector and the lens, therefore, share the job of controlling the light so that the resultant beam pattern is as smooth as possible. The optical system maximizes the lumens in the beam angle, while providing consistent lamp-to-lamp performance.

Beam Performance

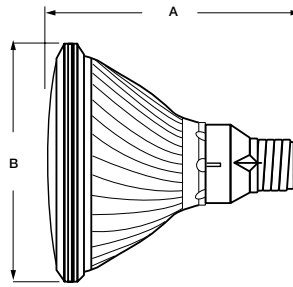
Comparison of Standard Halogen PAR to New CAPSYLITE with SPL Optics



The beam performance of the CAPSYLITE product line with SPL optics will change the way PAR lamps are specified. Traditionally, PAR lamps were designed to provide peak intensity in the center of the beam and the light level dropped rapidly from that point. In contrast, the CAPSYLITE product line is designed to give a more even distribution of high level light across as broad an area as possible with no hot spots. The result is a uniform light level on the target that maximizes the impact of the halogen source.

Dimensions

CAPSYLITE PAR38	
(A) MOL	5 5/16 "
(B) Diam	4 3/4 "



Footcandle

Distance from Source (in ft.)	Diameter (in ft.)	fc*	45PAR/CAP/SPL/SP9	Diameter (in ft.)	fc*	45PAR/CAP/SPL/WSP12	Diameter (in ft.)	fc*	45PAR/CAP/SPL/FL30	Diameter (in ft.)	fc*	45PAR/CAP/SPL/WFL50	Diameter (in ft.)	fc*	60PAR/CAP/SPL/SP9
3'	0.9	1111		1.0	700		2.0	167		3.2	78		0.9	1778	
6'	1.3	278		1.7	175		3.6	42		6.0	19		1.3	444	
9'	1.8	123		2.3	78		5.2	19		8.8	9		1.8	198	
Distance from Source (in ft.)	Diameter (in ft.)	fc*	60PAR/CAP/SPL/WSP12	Diameter (in ft.)	fc*	60PAR/CAP/SPL/NFL25	Diameter (in ft.)	fc*	60PAR/CAP/SPL/FL30	Diameter (in ft.)	fc*	75PAR/CAP/SPL/SP9	Diameter (in ft.)	fc*	75PAR/CAP/SPL/WSP12
3'	1.0	1167		1.7	411		2.0	278		0.9	2133		1.0	1367	
6'	1.7	292		3.1	103		3.6	69		1.3	533		1.7	342	
9'	2.3	130		4.4	46		5.2	31		1.8	237		2.3	152	
Distance from Source (in ft.)	Diameter (in ft.)	fc*	75PAR/CAP/SPL/FL30	Diameter (in ft.)	fc*	75PAR/CAP/SPL/WFL50	Diameter (in ft.)	fc*	90PAR/CAP/SPL/SP9	Diameter (in ft.)	fc*	90PAR/CAP/SPL/WSP12	Diameter (in ft.)	fc*	90PAR/CAP/SPL/NFL25
3'	2.0	350		3.2	144		0.9	2467		1.0	1589		1.7	522	
6'	3.6	88		6.0	36		1.3	617		1.7	397		3.1	131	
9'	5.2	39		8.8	16		1.8	274		2.3	177		4.4	58	
Distance from Source (in ft.)	Diameter (in ft.)	fc*	90PAR/CAP/SPL/FL30	Diameter (in ft.)	fc*	90PAR/CAP/SPL/WFL50	Diameter (in ft.)	fc*	120PAR/CAP/SPL/SP10	Diameter (in ft.)	fc*	120PAR/CAP/SPL/NFL25	Diameter (in ft.)	fc*	120PAR/CAP/SPL/FL30
3'	2.0	389		3.2	178		0.9	2500		1.7	856		2.0	511	
6'	3.6	97		6.0	44		1.4	625		3.1	214		3.6	128	
9'	5.2	43		8.8	20		2.0	278		4.4	95		5.2	57	
Distance from Source (in ft.)	Diameter (in ft.)	fc*	120PAR/CAP/SPL/WFL50	Diameter (in ft.)	fc*	250PAR/CAP/SPL/SP10	Diameter (in ft.)	fc*	250PAR/CAP/SPL/FL30						
3'	3.2	244		0.9	5167		2.0	1000							
6'	6.0	61		1.4	1292		3.6	250							
9'	8.8	27		2.0	574		5.2	111							

SYLVANIA CAPSYLITE PAR lamps are available in a full range of beam angles to meet the demands of virtually any display or accent lighting application. For each available CAPSYLITE PAR lamp, this table shows how lamp-output in footcandles varies as a function of distance.

Ordering and Specification Information

Item Number	Ordering Abbreviation	Watts	Base	Avg. Rated Life (hrs.)	Volts	CBCP	Beam Angle	Lumens	MOL
14590	45PAR/CAP/SPL/SP9	45	Medium Skirt	2500	120	10,000	9	560	5 5/16
14593	45PAR/CAP/SPL/SP9	45	Medium Skirt	2500	130	10,000	9	560	5 5/16
15538	45PAR/HAL/SPL/SP/RP	45	Medium Skirt	2500	120	10,000	9	560	5 5/16
14589	45PAR/CAP/SPL/WSP12	45	Medium Skirt	2500	120	6300	12	560	5 5/16
14592	45PAR/CAP/SPL/WSP12	45	Medium Skirt	2500	130	6300	12	560	5 5/16
14588	45PAR/CAP/SPL/FL30	45	Medium Skirt	2500	120	1500	30	560	5 5/16
14591	45PAR/CAP/SPL/FL30	45	Medium Skirt	2500	130	1500	30	560	5 5/16
15537	45PAR/HAL/SPL/FL/RP	45	Medium Skirt	2500	120	1500	30	560	5 5/16
14010	45PAR/CAP/WFL50	45	Medium Skirt	2500	130	700	50	560	5 5/16
14469	60PAR/CAP/SPL/SP9	60	Medium Skirt	3000	120	16,000	9	850	5 5/16
14449	60PAR/CAP/SPL/SP9	60	Medium Skirt	3000	130	16,000	9	850	5 5/16
14423	60PAR/CAP/SPL/WSP12	60	Medium Skirt	3000	120	10,500	12	850	5 5/16
14472	60PAR/CAP/SPL/NFL25	60	Medium Skirt	3000	120	3700	25	850	5 5/16
14468	60PAR/CAP/SPL/FL30	60	Medium Skirt	3000	120	2500	30	850	5 5/16
14448	60PAR/CAP/SPL/FL30	60	Medium Skirt	3000	130	2500	30	850	5 5/16
14514	75PAR/CAP/SPL/SP9	75	Medium Skirt	2500	120	19,200	9	1060	5 5/16
14516	75PAR/CAP/SPL/SP9	75	Medium Skirt	2500	130	19,200	9	1060	5 5/16
14510	75PAR/CAP/SPL/WSP12	75	Medium Skirt	2500	120	12,300	12	1060	5 5/16
14513	75PAR/CAP/SPL/FL30	75	Medium Skirt	2500	120	3150	30	1060	5 5/16
14515	75PAR/CAP/SPL/FL30	75	Medium Skirt	2500	130	3150	30	1060	5 5/16
14517	75PAR/CAP/SPL/WFL50	75	Medium Skirt	2500	130	1300	50	1060	5 5/16
14586	90PAR/CAP/SPL/SP9	90	Medium Skirt	2500	120	22,200	9	1310	5 5/16
14587	90PAR/CAP/SPL/SP9	90	Medium Skirt	2500	130	22,200	9	1310	5 5/16
15539	90PAR/CAP/SPL/SP/RP	90	Medium Skirt	2500	130	22,200	9	1310	5 5/16
14580	90PAR/CAP/SPL/WSP12	90	Medium Skirt	2500	120	14,300	12	1310	5 5/16
14578	90PAR/CAP/SPL/WSP12	90	Medium Skirt	2500	130	14,300	12	1310	5 5/16
14601	90PAR/CAP/SPL/NFL25	90	Medium Skirt	2500	130	4700	25	1310	5 5/16
15545	90PAR/HAL/SPL/FL/RP	90	Medium Skirt	2500	120	3500	30	1310	5 5/16
14579	90PAR/CAP/SPL/FL30	90	Medium Skirt	2500	120	3500	30	1310	5 5/16
14577	90PAR/CAP/SPL/FL30	90	Medium Skirt	2500	130	3500	30	1310	5 5/16
14602	90PAR/CAP/SPL/WFL50	90	Medium Skirt	2500	130	1600	50	1310	5 5/16
14856	120PAR/CAP/SPL/SP10	120	Medium Skirt	3000	120	22,500	10	1800	5 5/16
14874	120PAR/CAP/SPL/SP10	120	Medium Skirt	3000	130	22,500	10	1800	5 5/16
14848	120PAR/CAP/SPL/NFL25	120	Medium Skirt	3000	120	7700	25	1800	5 5/16
14855	120PAR/CAP/SPL/FL30	120	Medium Skirt	3000	120	4600	30	1800	5 5/16
14861	120PAR/CAP/SPL/FL30	120	Medium Skirt	3000	130	4600	30	1800	5 5/16
14594	120PAR/CAP/SPL/WFL50	120	Medium Skirt	3000	120	2200	50	1800	5 5/16
15526	250PAR/CAP/SPL/SP10	250	Medium Skirt	4500	120	46,500	10	3500	5 5/16
15558	250PAR/CAP/SPL/FL30	250	Medium Skirt	4500	120	9000	30	3500	5 5/16

OSRAM SYLVANIA
National Customer
Support Center
18725 N. Union Street
Westfield, IN 46074

Industrial & Commercial

Phone: 1-800-255-5042
Fax: 1-800-255-5043

National Accounts

Phone: 1-800-562-4671
Fax: 1-800-562-4674

Special Markets

Phone: 1-800-762-7191
Fax: 1-800-762-7192

In Canada
OSRAM SYLVANIA LTD.
Headquarters
2001 Drew Road
Mississauga, ON L5S 1S4

Industrial & Commercial

Phone: 1-800-263-2852
Fax: 1-800-667-6772

Special Markets

Phone: 1-800-265-2852
Fax: 1-800-667-6772

Ordering Guide

45	PAR	/	CAP	/	SPL	/	NSP	9
Wattage:	Parabolic		CAPSYLITE				Beam Spread:	Beam Angle
45	Reflector						SP=Spot	9°
60	Diameter						NSP=Narrow Spot	10°
75	30=30/8						WSP=Wide Spot	25°
90							NFL=Narrow Flood	30°
120							FL=Flood	40°
250							WFL=Wide Flood	50°

SYLVANIA, CAPSYLITE and ECOLOGIC are registered trademarks of OSRAM SYLVANIA, Inc.

SPL is a trademark of OSRAM SYLVANIA, Inc.

Visit our website: www.sylvania.com