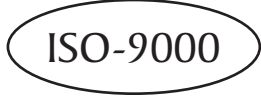


### High Pressure Sodium Core & Coil Ballast Kit

### 47634 LU250/SUPER5-KIT

FOR ONE 250 WATT, S50 HPS

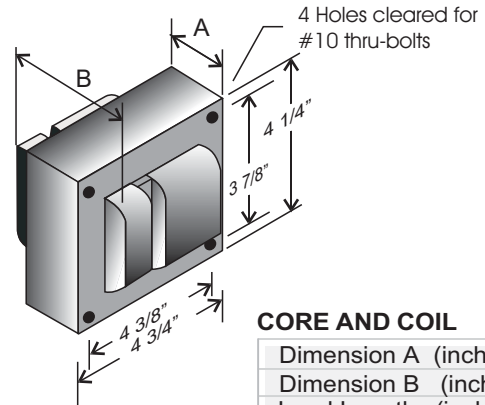
Line Voltage	120/208/240/277/480V
Regulation	
Line Volts	+/-10%
Line Watts	WHITIN TRAPEZOID
Frequency	60 Hz
Circuit Type	CWA
Power Factor (min)	90%
Insulation Class	H(180°)
Min. Ambient Starting Temp.	-40° F or -40° C



Line Voltage (Volts)	120	208	240	277	480
Line Current (Amps)					
Operating	2.50	1.50	1.30	1.10	0.65
Open Circuit	1.65	0.96	0.80	0.75	0.40
Starting	1.61	0.95	0.81	0.70	0.40
Input Watts (W)	295	295	295	295	295
Open Circuit Voltage (V)	190	190	190	190	190
Drop Out Voltage (V)	83	147	168	187	325
UL(1029) Bench Top Rise	A	A	A	A	A
Recommended Fuse (Amps)	10	4	4	3	2

HIGH POTENTIAL TEST (VOLTS)	
1 Minute	2000
2 Seconds	2500
Open Circuit Voltage Test (volts)	175- 210
Short-Circuit Current Test (Amps)	
Secondary Current	4.0 -4.5
Input Current (Amps)	1.37- 1.63   0.79- 0.96   0.69- 0.83   0.59- 0.72   0.35- 0.42

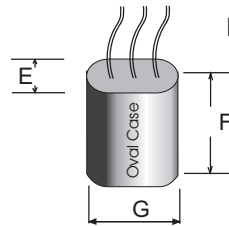
#### 4 1/4" x 4 3/4" CORE



#### CORE AND COIL

Dimension A (inches)	2.00
Dimension B (inches)	4.00
Lead Lengths (inches)	12

#### IGNITOR 37-63-AS-6.9-N6



(THERMAL PLASTIC CASE)  
Max. case temp  
110° C

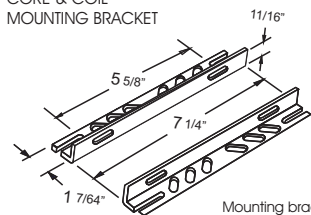
NAED: XXXXX

Dimension E (inches)	1.17
Dimension F (inches)	2.5
Dimension G (inches)	1.9

Maximum Distance To Lamp: 2 feet

#### BRACKET CORE & COIL MOUNTING BRACKET

NAED: XXXXX



Mounting bracket for  
Core & Coil Ballasts  
(2 brackets with thru bolts)

NAED: XXXXX

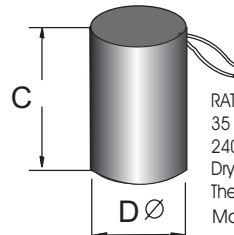
MOUNTING CLIP for round  
case (Furnished as standard  
with B suffix ballast)

NAED: XXXXX

MOUNTING CLIP for oval  
case (Furnished as standard  
with B suffix ballast)

#### CAPACITOR

NAED: XXXXX



RATING  
35 Mfd ± 3%  
240 VAC MIN  
Dry Film Capacitor  
Thermal Plastic Case  
Max. Case Temp 100° C  
NO PCB'S

Dimension C (inches)	5.00
Dimension D (inches)	1.75

#### PRODUCT LABEL

**SYLVANIA**  
LU250/SUPER5-KIT

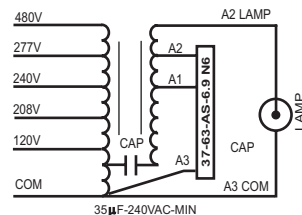
Lamp Type  
S50 250W HPS



1029A Class H  
Ground Ballast Core  
86-180-4

47634-4 Made in Mexico

Caution: High Voltage Pulse Present on Open Circuit



#### CARTON LABEL

**SYLVANIA** 1 Ballast Kit 1 SKU's

LU250/SUPER5-KIT S50

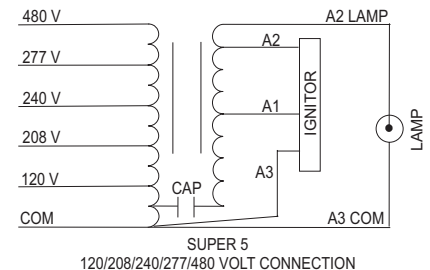
LUMALUX® 120/208/240/277/480 V

Magnetic Ballast/ Ballast magnétique Mexico

47634-4



1 00 46135 47634 8



#### WIRING DIAGRAM F

#### CARTON CHARACTERISTICS

UNITS CARTON	CARTON/LAYER	# OF LAYERS	UNITS PALLET	PIECE WEIGHT	CARTON WEIGHT	PALLET WEIGHT
1	30	5	150	12.39 Lbs	12.79 Lbs	1953.63 Lbs
CARTON PALLET	CARTON DIMENSIONS	PALLET DIMENSIONS	PALLET DIMENSIONS LOADED, INCLUDING WOOD PALLET			
150	8.7" x 5.9" x 5.1"	40" x 48" x 7"	40" x 48" x 32.68"			

Item Number 47634 LU250/SUPER5-KIT

HIGH PRESSURE SODIUM Line Voltage

Primary Lamp Wattage